



WA-LS-PE 06-165/T

- Softline-design
- shock-resistant housing
- low-distortion sound

The 6W powered speaker with volume control and override relais is equipped with a 165mm full-range loudspeaker chassis and a 100V transformer with 3 power adjustments. The high-density, shock-resistant MDF wood housing in white provides a low resonance sound. A sturdy front grille made of steel guarantees enduring stability.

The speaker is also with the high protection class IP 54 against the security risks of environmental influences. The reliable spring clamp on the rear plate ensures a quick mounting on walls.

The speaker is connected by a 2-pin push-clamp.

Technical Data

Description	WA-LS-PE 06-165/T
Power	6/3/1,5 W
Frequency Range	197 - 21.900 Hz
Frequency Response	175 - 23.500 Hz
SPL 1W/1m, peak	100,6 dB
SPL Pmax/1m, peak	108,4 dB
Sensitivity 1W/1m	98,6 dB
Dispersion (-10dB)	180° (h) / 96° (v)
Temperature range	-20 / +80 °C
Dimensions	267x192x82 mm
Weight (net)	1,91 kg
Colour	white
Connector	2-pin push clamp
Mounting	spring clamp
Packing Unit	6
IP Rating	IP54

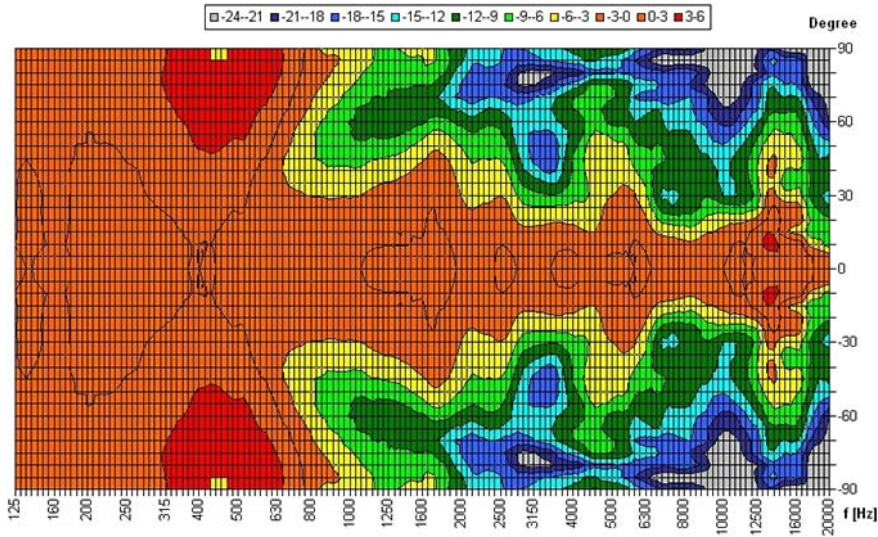
Product Attributes



Polar Diagrams

Horizontal Isobars

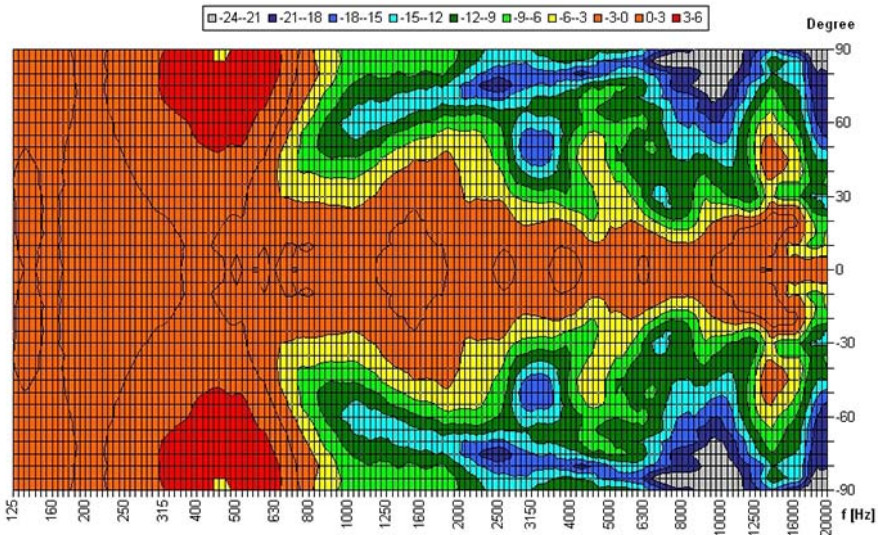
Copyright by Four-Audio GmbH & Co KG Licensed to AAC



Parameters: Cyclic Move: 0° ; Symmetry: 0,+180 sym ; Freq.Smooth: 1/3 Oct ; Ang.Resol.: 5° ; Rel. to: 0° Axis 0°

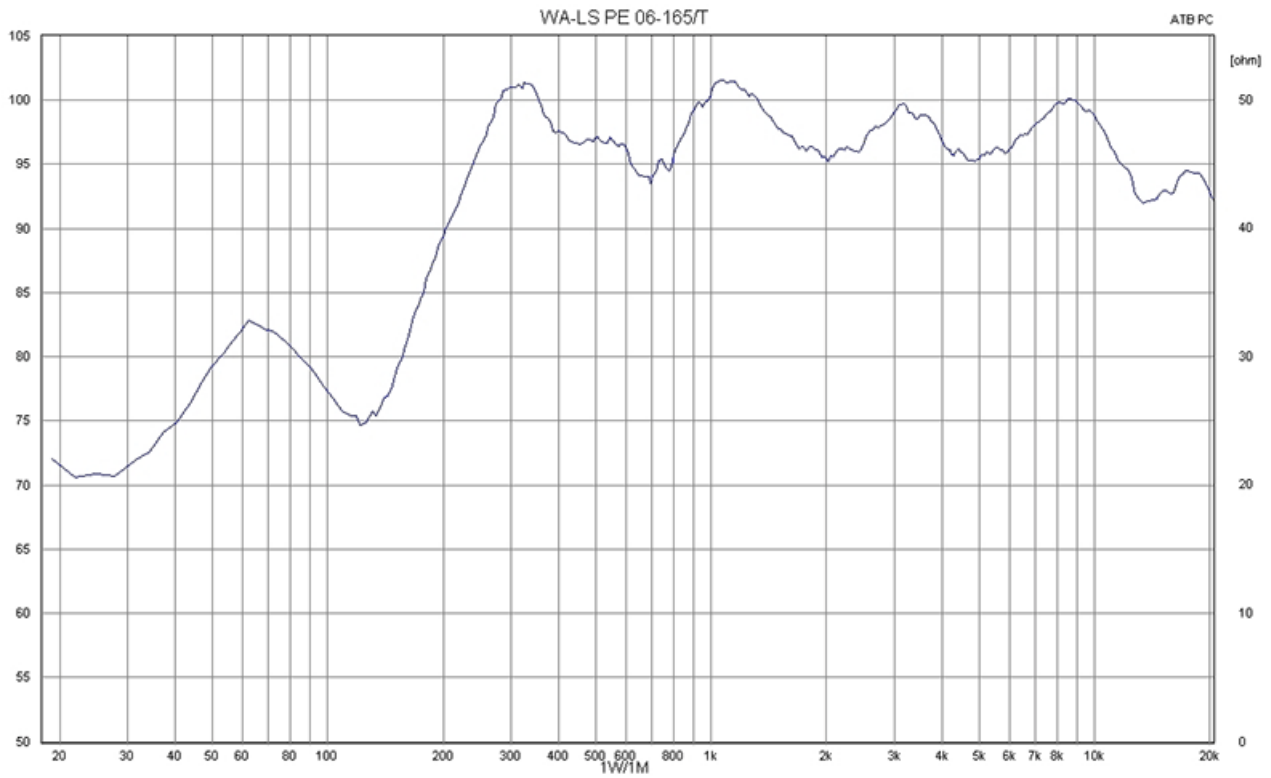
Copyright by Four-Audio GmbH & Co KG Licensed to AAC

Vertical Isobars

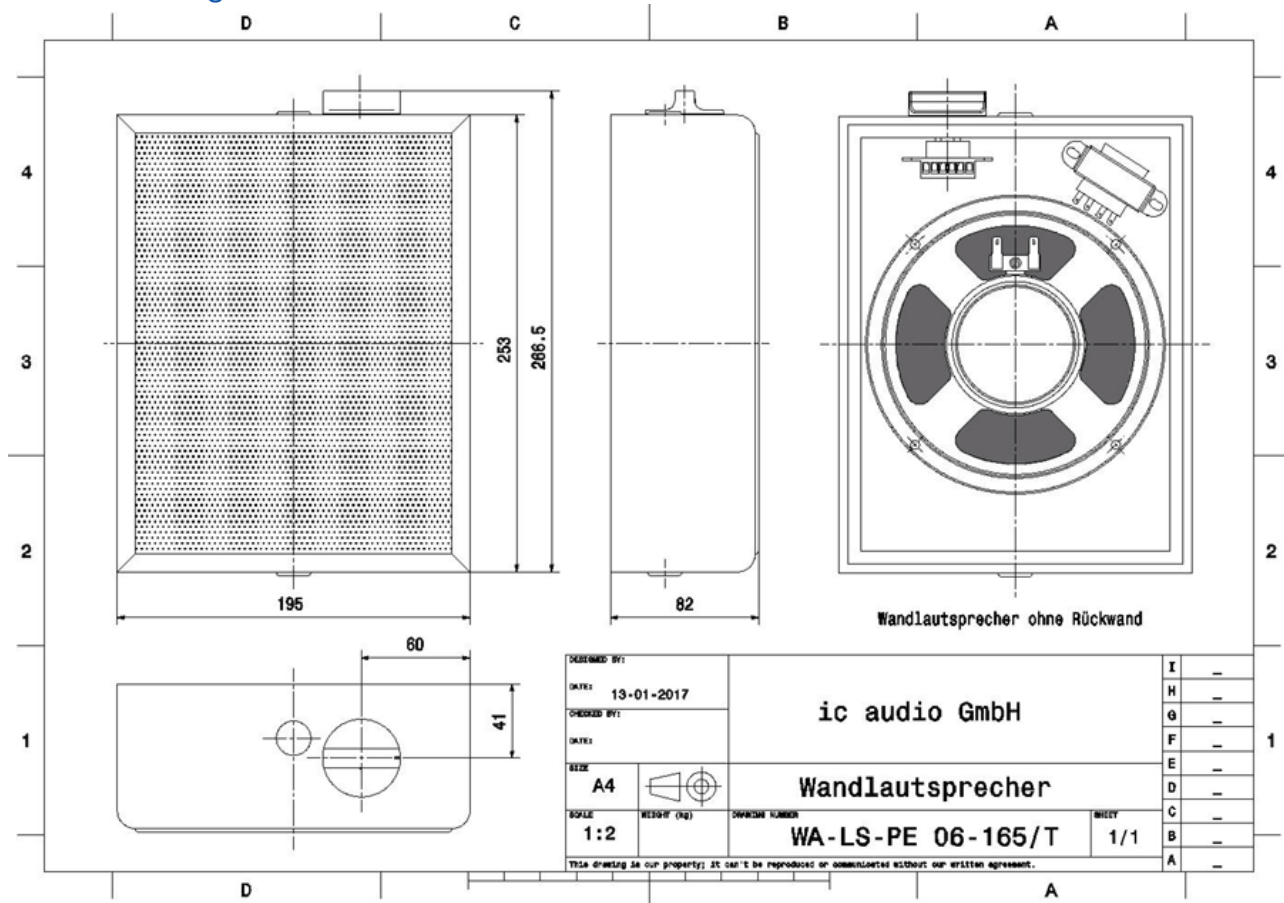


Parameters: Cyclic Move: 0° ; Symmetry: 0,+180 sym ; Freq.Smooth: 1/3 Oct ; Ang.Resol.: 5° ; Rel. to: 0° Axis 0°

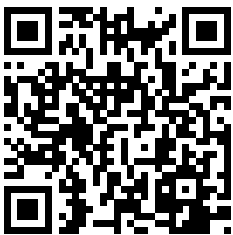
Frequency Response Diagrams



Technical Diagrams



RoHS compliant (2011/65/EU)



Article Nr.:
50617050

Packing Unit:
6

